



By Jean Paul Vellotti

For commercial skippers of vessels greater than 79 feet operating in the Great Lakes or within three nautical miles of U.S. coastlines, environmentally acceptable lubricants are the mandate. For everyone else, especially given the Environmental Protection Agency's continuing tighter regulations, switching to EALs may just be a matter of time.

In fact, with the EPA's new vessel general permit, released in 2013, that agency is looking to minimize the potential impact of lubricant discharges in the aquatic ecosystem. In contrast to the sudden impact of accidental spills, the focus is on the "long-tail" of lubricating leakages that the EPA claims slowly discharges a staggering amount of fluids each year.

RSC Bio Solutions, a Charlotte, N.C.-based lubricant manufacturer with ties to the marine and heavy industrial industries has recently stepped up its game with the expansion of their biodegradable lithium complex grease offering. The well-established EnviroLogic 802 line is now joined by EnviroLogic 800 and 801 bio-greases designed for severe outdoor environments and to withstand corrosion.

According to RSC, the new general permit-compliant lines were designed for a wide range of high-performance applications. But can industrial grease that meets EAL requirements last as long, or even outperform traditional stalwarts? What about compatibility?

Dr. Bernard C. Roell, Jr., vice president of technology at RSC Bio Solu-

# Save the seals

## Lubricating parts and fittings with bio-grease meets environmental requirements

**RSC's eco-friendly grease might be an EPA standard down the line.**

Using those guidelines, these products meet or exceed conventional grease," he explained. "While most of the time grease is changed when, say, putting in a new bearing, our product is compatible with products in the system."

Since no single grade of grease is capable of meeting all needs or applications, it makes sense that the trio now covers a wider range of National Lubricating Grease Institute specifications. Whereas

the 802 product has a "normal grease" consistency, the 801 and 800 lines are "soft," and "very soft." Keep in mind neither of these dips into fluid or thin liquid territory; you will need NLGI #00 and #000 for that application, which RSC may develop, as demand calls for it, according to Roell.

the 802 product has a "normal grease" consistency, the 801 and 800 lines are "soft," and "very soft." Keep in mind neither of these dips into fluid or thin liquid territory; you will need NLGI #00 and #000 for that application, which RSC may develop, as demand calls for it, according to Roell.

Retail price is TBD.

the 802 product has a "normal grease" consistency, the 801 and 800 lines are "soft," and "very soft." Keep in mind neither of these dips into fluid or thin liquid territory; you will need NLGI #00 and #000 for that application, which RSC may develop, as demand calls for it, according to Roell.

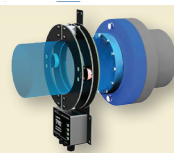
Retail price is TBD.

**CONTACT**

**RSC Bio Solutions**  
600 Radiator Rd.,  
Indian Trail, NC 28079  
tel. (800) 661-3558  
[www.rscbio.com](http://www.rscbio.com)

## AT A GLANCE

If you ever wondered how much torque is really being transferred through a rotating shaft, consider **BINSFELD ENGINEERING's** new **TORQUETRAK TPM2** power-monitoring instrument. Using a rotating collar and stationary ring, the unit bolts on and doesn't require machine work. The TPM2 uses an RS422 full duplex connector for point-to-point serial interface communication in real time. Binsfeld can accommodate collars from less than 1 inch up to 40 inches in diameter and varying RPMs dependent on application. For technical information and product inquires, contact (231) 334-4383 and [www.binsfeld.com](http://www.binsfeld.com).



Looking to map the seafloor and see detail in the water column? Then the **F3 WIDESCAN SOUNDER** from New Zealand-based **WASSP LTD.** is worth a look. The latest addition squarely targets the coastal fishing fleet and builds on the adoption success of more expensive WASSP products being used on bigger boats. While the heart of the system is a fully scalable architecture inside a ruggedized black box, the more practical side is a new CDX user interface with touch screen capability. For further information on WASSP products, visit [www.wassp.com](http://www.wassp.com).



A burst pipe or hydraulic makes for a good day, and an unexpected burst water hose is even worse. **WORLD WIDE METRIC's** **RAPID REPAIR CLAMP** is a fast and easy way to temporarily repair the leak without the use of any tools. Made from marine-grade stainless steel, the clamp provides a tight seal for the above fluids as well as steam, gas and diesel. Available in four diameters up to 36 inches, the reusable clamp can withstand up to 20 bar of pressure. Contact the company directly for sales, sizing and ordering at: [www.worldwidemetric.com](http://www.worldwidemetric.com).

